

# Rubber End Cap

Rubber end cap for sealing Flexalen<sup>®</sup> 600 and Flexalen<sup>®</sup> Multiline pre-insulated pipes in longitudinal direction



## Required Tools

Cleaner

Tissues

Knife

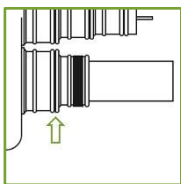
Cable ties

## Application Instruction

### Application conditions and pipe preparation

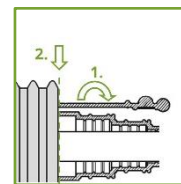
- Ambient temperature: +5 to +40°C
- Service pipe is cut straight and without damage
- Service pipe and outer casing is free from dirt and condensation

**Note:** Place the rubber end cap before scraping the service pipe (red pipe) to prevent contamination

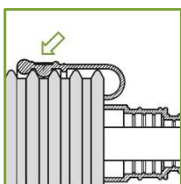


**01.**  
Select the correct rubber end cap for your pre-insulated pipe. If necessary, cut the rubber end cap to fit your service pipe dimension. Only use the groove at the end cap made for this purpose.

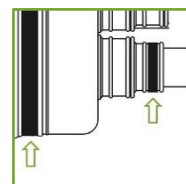
**02.**  
Clean the sealing lips and casing pipe.



**03.**  
Fold the part of the rubber end cap intended for the casing pipe inside out. Apply the rubber end cap first on the service pipe(s) and slide it towards the casing pipe/insulation foam as far as possible. If necessary, use water or PB cleaner as lubricant.



**04.**  
Fold back the rubber end cap to cover the casing pipe. Make sure that it overlaps at least 3 corrugations of the casing pipe and fits into the corrugation as shown in picture 4.



**05.**  
Secure the fit of the rubber end cap on both the service pipe(s) and casing pipe by mounting cable ties on the caps' notches intended for this purpose. Cut off excess length of the cable ties.

**Attention:** if the end cap is mounted on a pipe end to be post-insulated, do not mount cable ties on the casing pipe but only the service pipes! See other product instruction leaflet(s).